

CA Lottery | Rewards Program

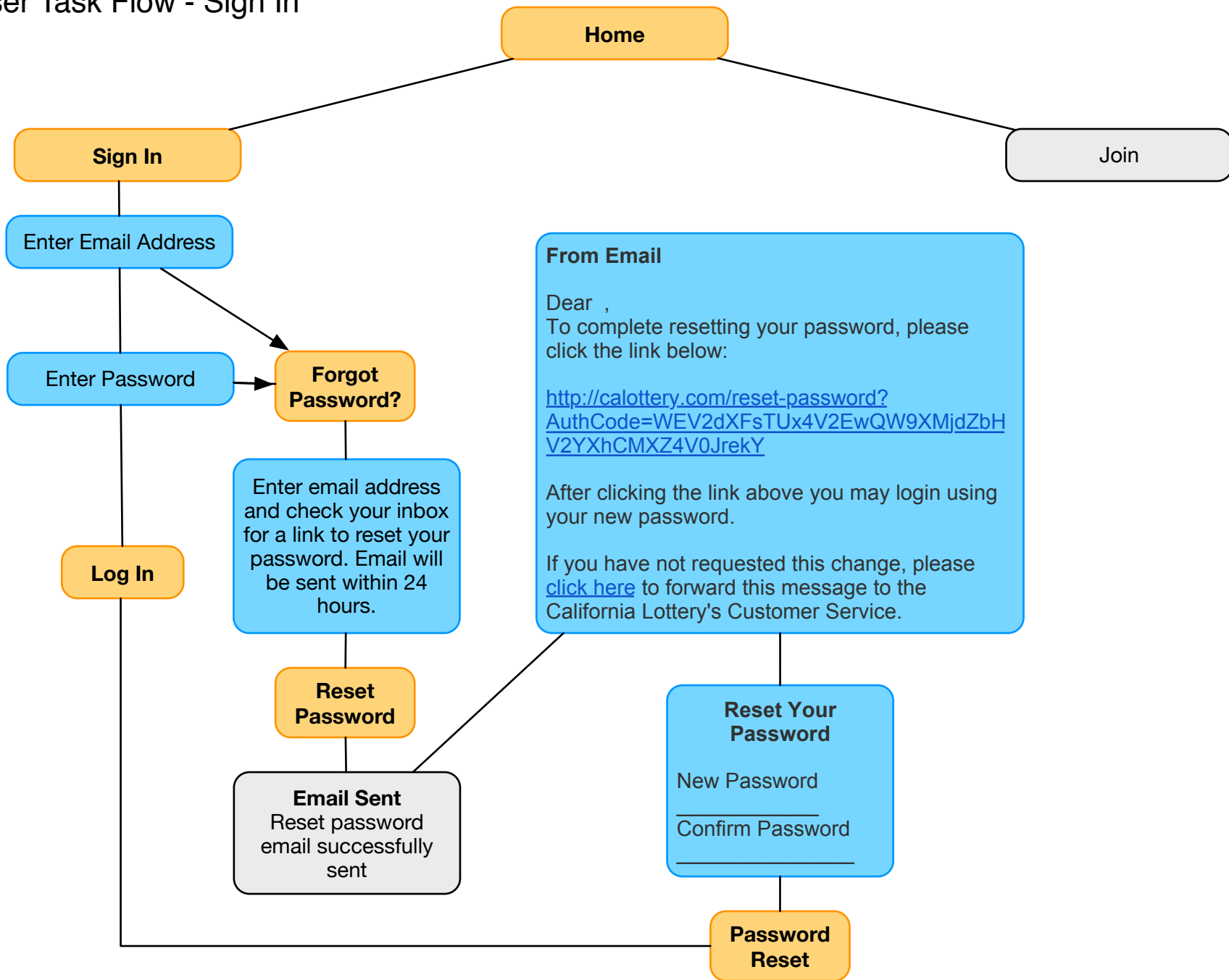
Sign In & Join

Wireframes Depicting Sign In and Tiered Join

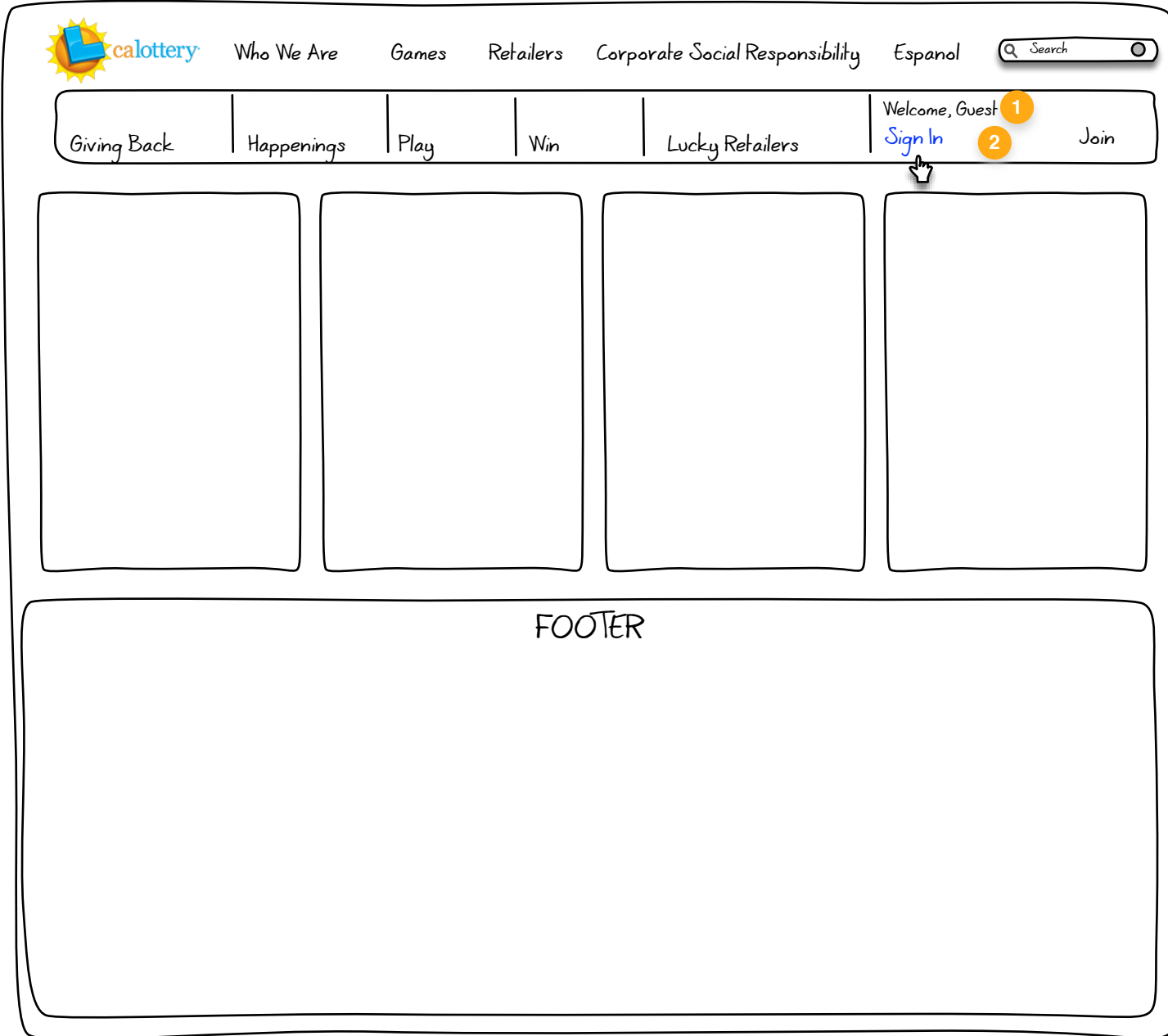
User Task Flow - Sign In	4
Home Page	5
Display Sign In Layer	6
My Account	7
User Task Flow - Registration	9
Home Page	10
Display DOB Pre-Qualifier	11
DOB Error Modal	12
Opt-Out of Programs	13
Registration Form	14
Registration Form Continued	15
Registration Complete Modal	16
Modal - Duplicate Email	17
Pattern - Inline Validation	18
Pattern - ZIP Code, City & State	

User Experience Task Flow | Sign In

User Task Flow - Sign In



Home Page



Notes

- 1) **Remove My Account**, user has not set up an account.
- 2) **Sign In** and **Join** are more visible.

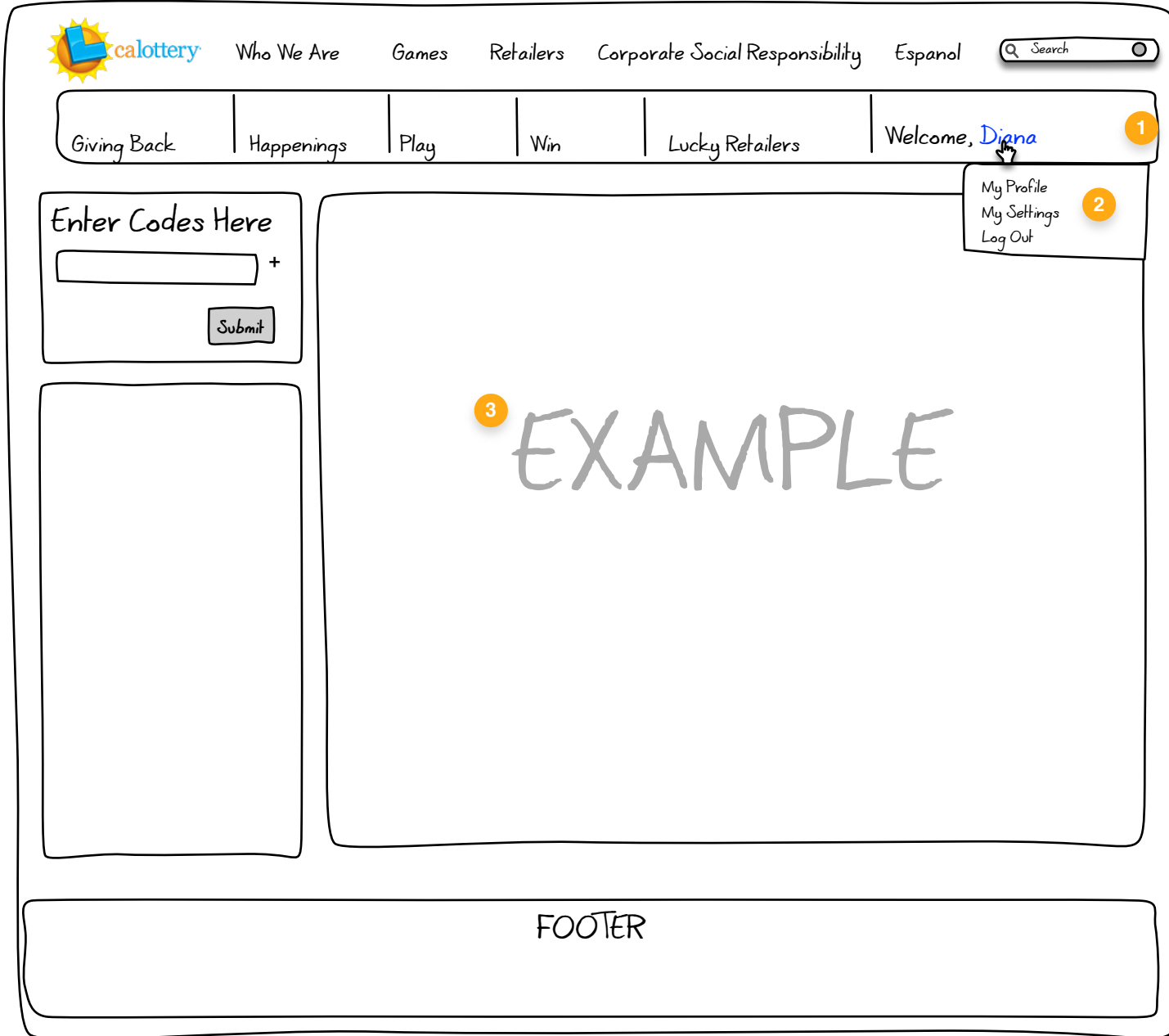
Home Page - Display Sign In Layer



Notes

- 1) Remove **Join** link to focus user on task.
- 2) Consider rotating **CTA** that support the benefits of joining CA Lottery.
- 3) **Username** field with users credentials. If not "remembers" display
- 4) **Password** has been saved and displays as hidden.
- 5) **Remember me** is selected. If not selected, above fields display placeholder text inline.
- 6) **Sign In** has substantial visual weight
- 7) **Password recovery** link
- 8) **Register** link
- 9) **Terms of Service** link. (Consider part of the Join process and remove from Sign In process.)

Home Page

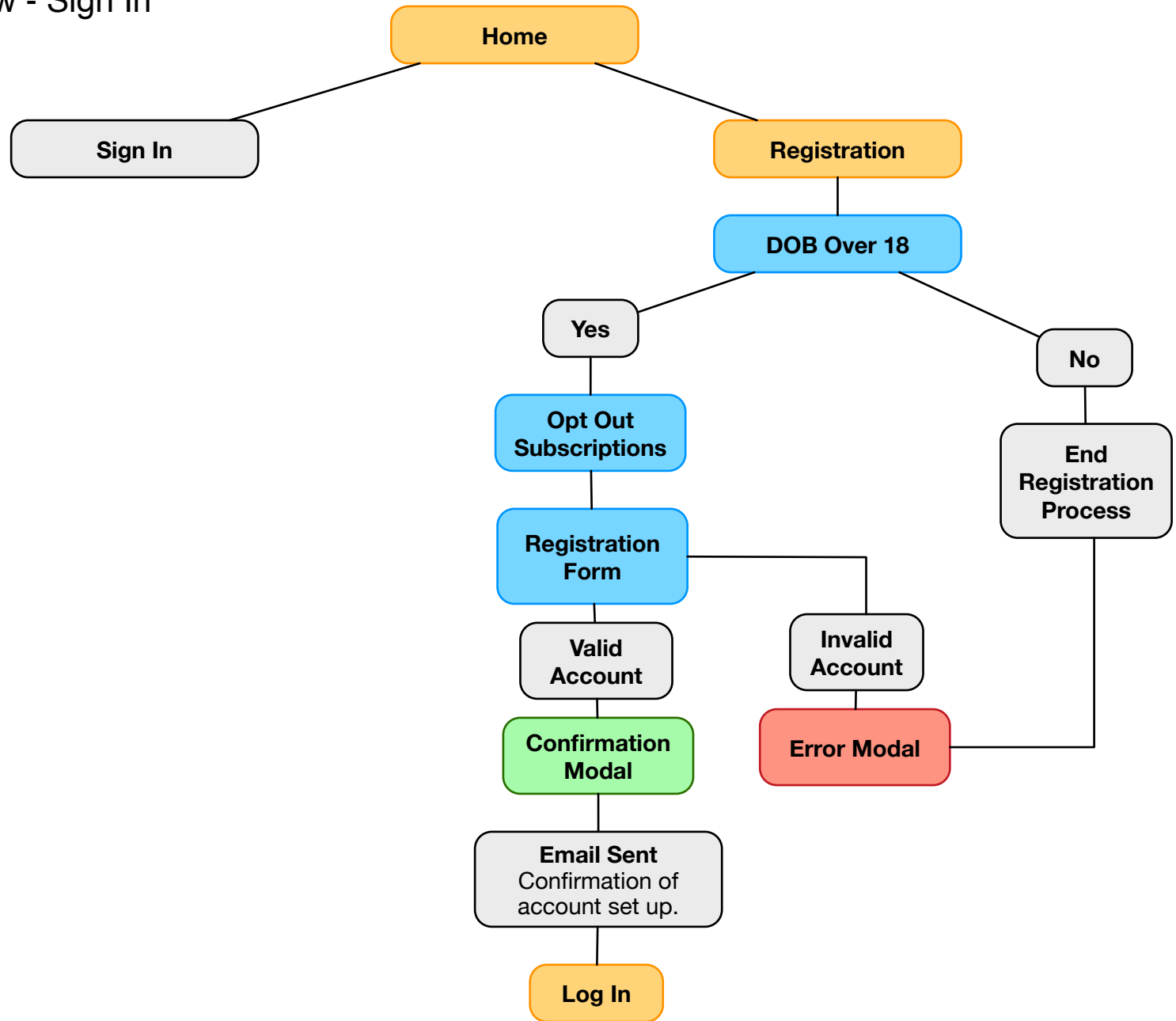


Notes

- 1) **Welcome, User Name** displays.
- 2) User can select name to display profile, setting and log out functions.
- 3) Example of user's **dashboard** (TDB).

User Experience Task Flow I Register

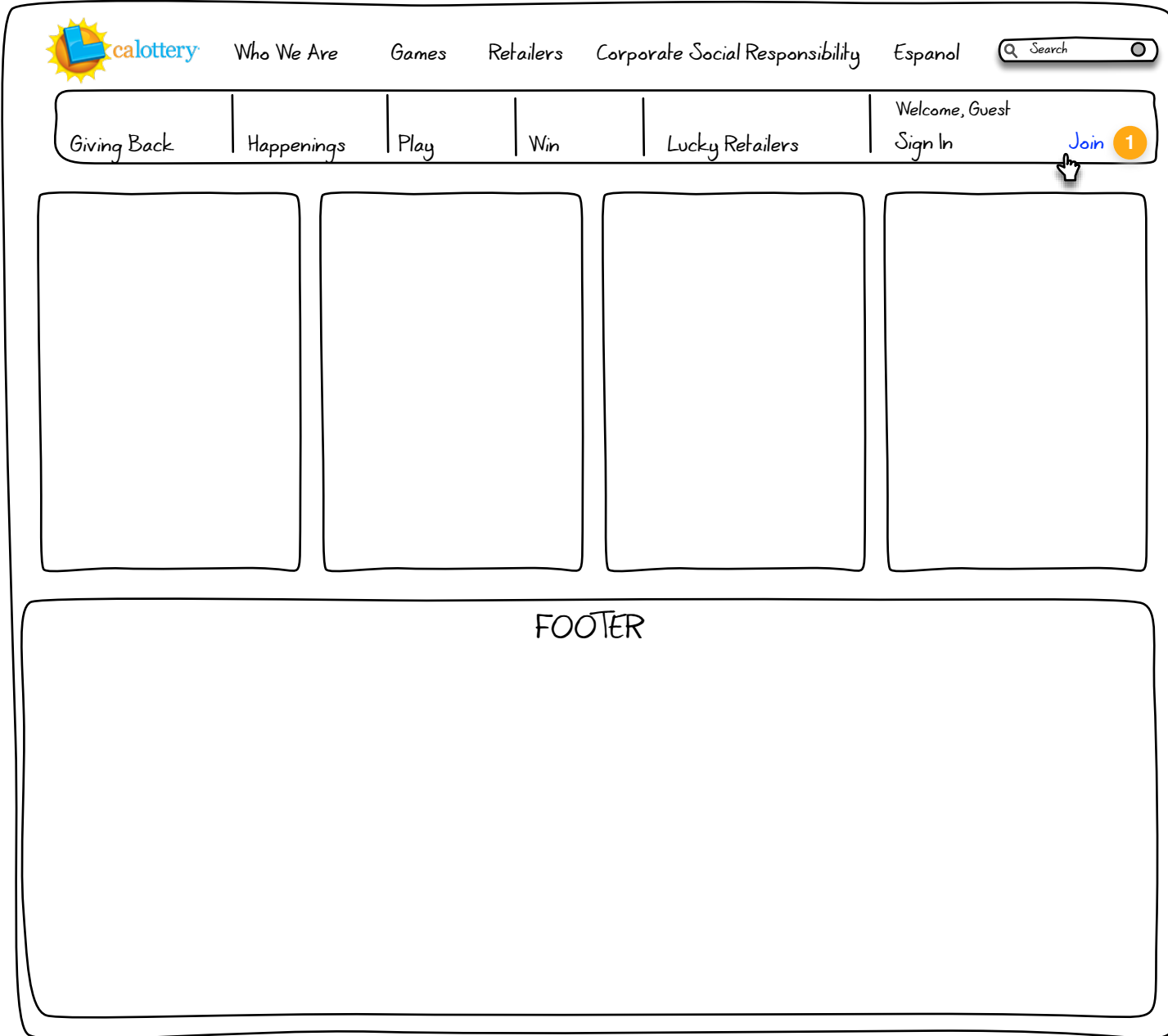
User Task Flow - Sign In



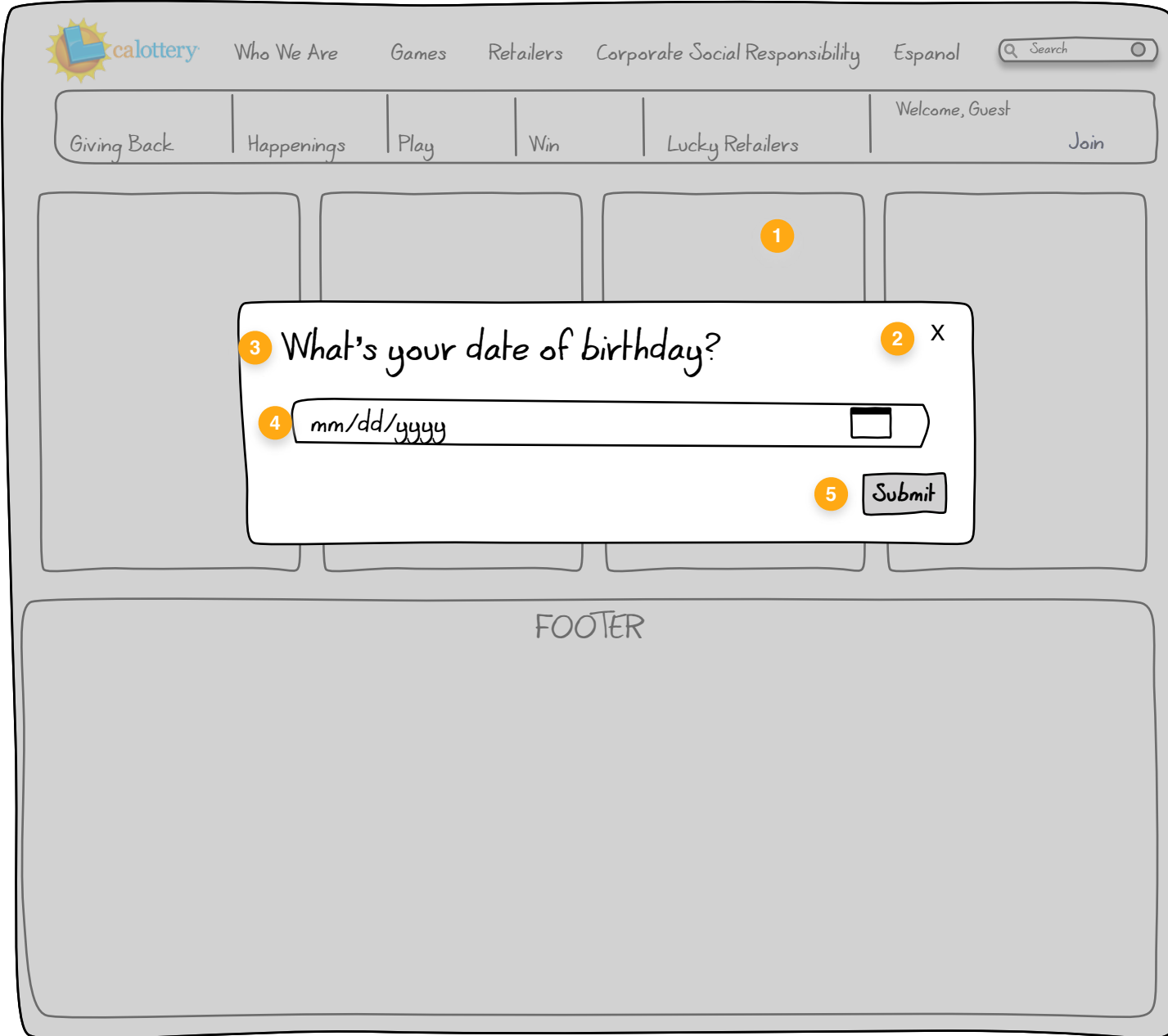
Home Page - Join

Notes

- 1) Select **Join** link to redirect to reg form.



Home Page - DOB Qualifier



Notes

- 1) **Lightbox** effect to minimize background and maximize modal dialogue box.
- 2) Error Message with **X** to **close**.
- 3) Header displays question asked (**DOB**)
- 4) **Date pattern** TBD but should allow either data entry or calendar selector.
- 5) **Submit** to validate DOB.

Home Page - DOB Validation



Notes

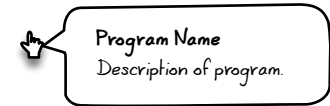
- 1) **Lightbox** effect to minimize background and maximize modal dialogue box.
- 2) Error Message with **X** to **close**.
- 3) Header displays main issue.
- 4) **Error Message** which tells user when to return.
- 5) **OK** to close modal. (Define where user should be redirected.)

Join - Opt Out of Promotions

The wireframe shows a web page layout for a sign-up process. At the top is a header with the 'calottery' logo and navigation links: 'Who We Are', 'Games', 'Retailers', 'Corporate Social Responsibility', and 'Espanol'. A search bar is on the right. Below the header is a secondary navigation bar with links: 'Giving Back', 'Happenings', 'Play', 'Win', 'Lucky Retailers', 'Welcome, Guest', and 'Join'. The main content area contains a large heading 'What would you like to sign up for?' followed by a paragraph of instructional text. Below this is a section titled 'CA Lottery Sign Ups' with four radio button options, each with a descriptive sentence. A 'Next' button is at the bottom right of this section. The footer area is labeled 'FOOTER'.

Notes

- 1) Conversational toned **header**.
- 2) **Instructional** text.
- 3) Descriptive **header**
- 4) **Opt Out** for email promos and alerts.
- 5) **Opt In** to sign up for additional programs. User can select link to review.
- 6) On hover, display tool tip.



- 7) **Next** button to submit and move to next screen.

Join - User Information

Version 1

Notes

- 1) **Join** becomes displays and sign in does not display.
- 2) Conversational toned **header**.
- 3) **Instructional** text with link to privacy policy.
- 4) Descriptive **field headers**
- 5) **Legal First Name** for placeholder text to reenforce direction. ⓘ symbol will display further details.
- 6) **Middle Initial (optional)** is not a required field.
- 7) **Legal Last Name** placeholder text to reenforce direction.
- 8) **Suffix (optional)** drop down. If selected, display suffix types.
- 9) **Display 9 - 12** if user opts in for programs that require Tier 2 authentication.
- 10) **Area code** and **primary phone** number fields.
- 11) **Mailing address** and secondly address (optional) fields. Validation against Experian, display error inline. (See example at end of document.)
- 12) **ZIP Code** validation pattern to display city and state.
- 13) **Email Address** field validates for syntax, display validation inline. (See example at end of document.)
- 14) **Confirm email address**, consider removing
- 15) **Create password** with instructional icon to inform user on password best practices
- 16) **Confirm password** validation
- 17) **Cancel** and **Submit** buttons.

Join - Email & Password

Continued from previous page.

13 **Email & Password**

14

15

16 ⓘ

17

18

FOOTER

Notes

- 1) **Join** becomes displays and sign in does not display.
- 2) Conversational toned **header**.
- 3) **Instructional** text with link to privacy policy.
- 4) Descriptive **field headers**
- 5) **Legal First Name** for placeholder text to reenforce direction. ⓘ symbol will display further details.
- 6) **Middle Initial (optional)** is not a required field.
- 7) **Legal Last Name** placeholder text to reenforce direction.
- 8) **Suffix (optional)** drop down. If selected, display suffix types.
- 9) **Display 9 - 12** if user opts in for programs that require Tier 2 authentication.
- 10) **Area code** and **primary phone** number fields.
- 11) **Mailing address** and secondly address (optional) fields. Validation against Experian, display error inline. (See example at end of document.)
- 12) **ZIP Code** validation pattern to display city and state.
- 13) **Email Address** field validates for syntax, display validation inline. (See example at end of document.)
- 14) **Confirm email address**, consider removing
- 15) **Create password** with instructional icon to inform user on password best practices
- 16) **Confirm password** validation
- 17) **Cancel** and **Submit** buttons.

Ho Join - Validate Email Modal

Version 1

Validation Modal

Notes

- 1) **Lightbox** effect to minimize background and maximize modal dialogue box.
- 2) Error Message with **X** to **close**.
- 3) Header displays main issue.
- 4) **Message** (to be crafted).
- 5) **OK** to close modal. (Define where user should be redirected.)

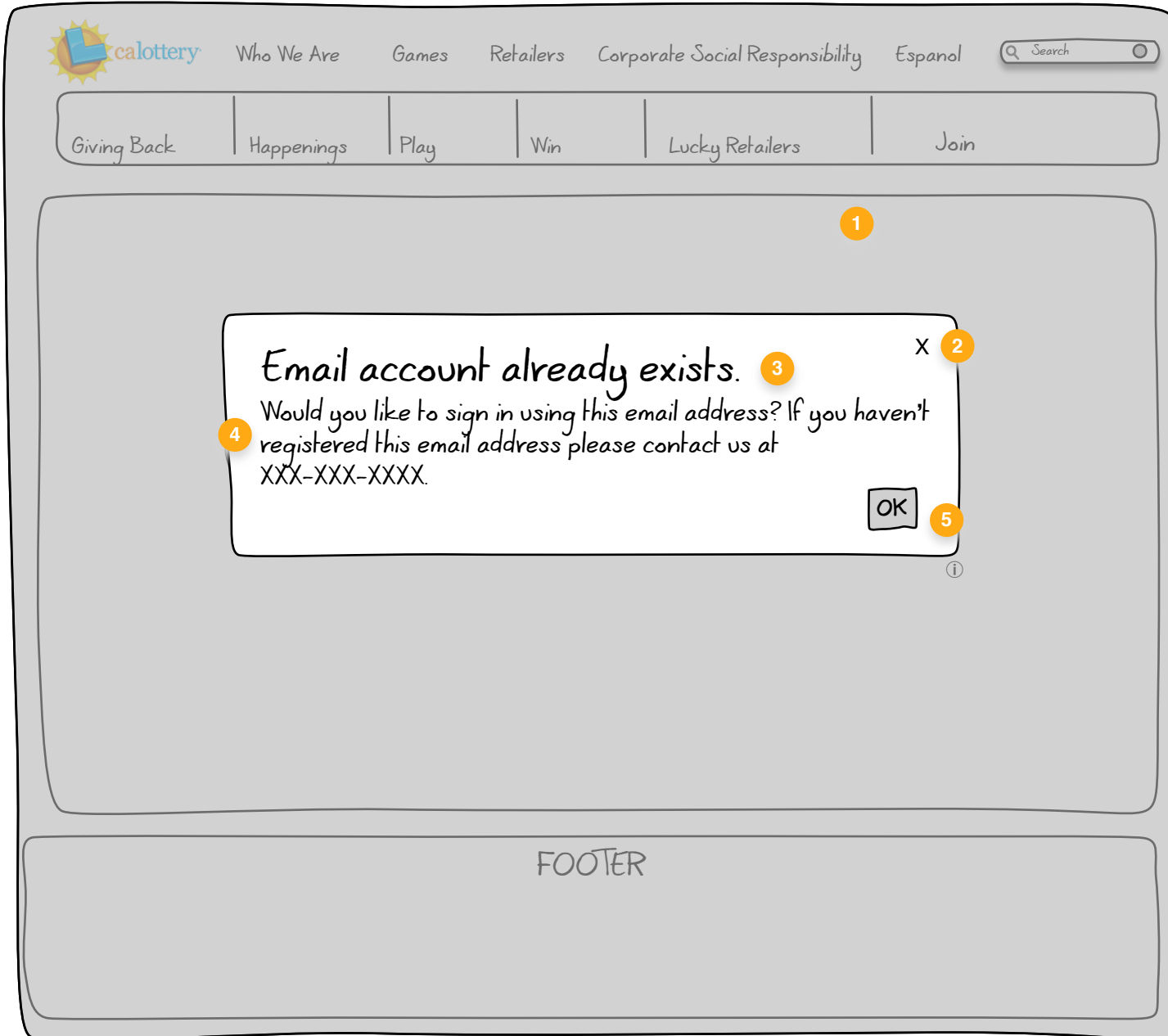


How Join - Duplicate Email

Join 3 of 4

Notes

- 1) **Lightbox** effect to minimize background and maximize modal dialogue box.
- 2) Error Message with **X** to close.
- 3) Header displays main issue.
- 4) **Message** (to be crafted).
- 5) **OK** to close modal. (Define where user should be redirected.)



Pattern - Inline Validation

The wireframe shows a website header with the CA Lottery logo and navigation links: Who We Are, Games, Retailers, Corporate Social Responsibility, and Espanol. A search bar is located on the right. Below the header is a horizontal menu with links: Giving Back, Happenings, Play, Win, and Lucky Retailers.

The main content area is divided into two sections:

- Inline Error Pattern:** A text input field containing "Diana.Prinse@xom" is outlined in red. A red "X" icon is positioned at the end of the field. Below the field, a red error message reads: "Incorrect email address. Please enter a correct email address."
- Inline Validation Pattern:** A text input field containing "Diana.Prinse@xom" is outlined in green. A green checkmark icon is positioned at the end of the field.

Notes

- 1) Validate inline
- 2) Display red stroke and X in field with error.
- 3) Display help text below with instruction
- 4) Validation should display green and fade to black after x time.

ZIP Code Pattern

1 First Name Last Name
Company Name (optional)
Area Code Primary Phone
Street Address
Apt, Suite, Bldg, Gate Code. (optional)
ZIP Code Enter ZIP for City and State

2 First Name Last Name
Company Name (optional)
Area Code Primary Phone
Street Address
Apt, Suite, Bldg, Gate Code. (optional)
95757 Elk Grove, CA

3 First Name Last Name
Company Name (optional)
Area Code Primary Phone
Street Address
Apt, Suite, Bldg, Gate Code. (optional)
95757 Elk Grove, CA
 Other
United States This is a business address ?

4 First Name Last Name
Company Name (optional)
Area Code Primary Phone
Street Address
Apt, Suite, Bldg, Gate Code. (optional)
City **5** CA **6** 95757

Notes

- 1) Display ZIP Code field and message to the right.
- 2) User enters Zip Code
- 3) Once ZIP Code is entered display City drop down and State
- 4) If Other is selected display #5
- 5) User can enter city
- 6) State is CA only